

COMAND

2



Fastcopy

Programma per lavorazione stampi
Mold making tools
Outils pour l'usinage des moules
Fräs- und Kopierwerkzeuge für den Formenbau



Fastcopy**Twister**

Testina modulare 90° - LOGT1003	<i>pag. 2-3</i>
Testina modulare 90° - APKT1003	<i>pag. 2-4</i>
Testina modulare toroidale - RDHW..	<i>pag. 2-5</i>
Testina modulare per copiatura - CWR..	<i>pag. 2-6</i>
Testina modulare 90° - CCMW06	<i>pag. 2-7</i>
Testina modulare per copiatura - CPH..	<i>pag. 2-8</i>
Mandrino modulare DIN 69871 A - ISO 40	<i>pag. 2-9</i>
Mandrino modulare MAS403 - BT40	<i>pag. 2-10</i>
Mandrino modulare DIN 69871 A - ISO 50	<i>pag. 2-11</i>
Mandrino modulare DIN 69893 HSK 63	<i>pag. 2-12</i>
Attacco cilindrico modulare DIN 1835B	<i>pag. 2-13</i>

**Copymill**

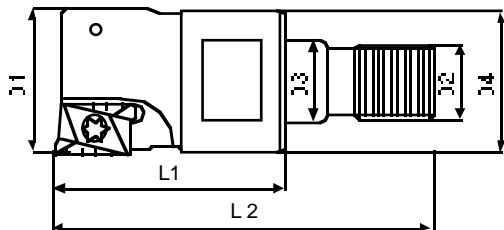
Copymill M65 - CWR..	<i>pag. 2-14</i>
Copymill M67 - CWR..	<i>pag. 2-15</i>
Copymill M165 - CPH..	<i>pag. 2-16</i>
Copymill M167 - CPH..	<i>pag. 2-17</i>



90° modular tool piece
 Tête modulaire 90°
 Eckfräser zum Aufschrauben 90°

Twister

Testina modulare 90°



Codice	Dimensioni mm							Inserto	Parti di Ricambio	
	D1	D2	D3	D4	L1	L2	Z			
TW1-01D16	16	M8	8.5	13	25	42	2	LOGT1003	TX2506	BTX08
TW2-01D20	20	M10	10.5	18	30	50	3	LOGT1003	TX2506	BTX08
TW3-01D25	25	M12	12.5	21	35	58	3	LOGT1003	TX2506	BTX08
TW4-01D32	32	M16	17	28	45	68	4	LOGT1003	TX2506	BTX08
Inserto	a	b	s	f	r					
LOGT1003	6.75	10.7	3.55	2.7	0.4					



Twister

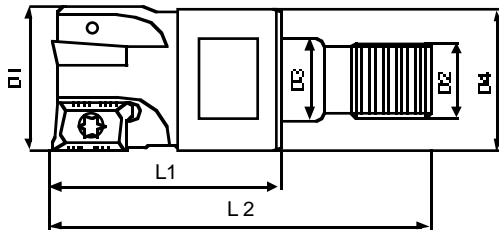



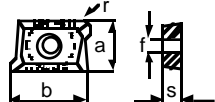
COMAND

Twister

90° modular tool piece
Tête modulaire 90°
Eckfräser zum Aufschrauben 90°

Testina modulare 90°



Codice	Dimensioni mm							Inserto	Parti di Ricambio	
	D1	D2	D3	D4	L1	L2	Z			
TW1-03D16	16	M8	8.5	13	25	42	2	APKT1003	TX2506	BTX08
TW2-03D20	20	M10	10.5	18	30	50	3	APKT1003	TX2506	BTX08
TW3-03D25	25	M12	12.5	21	35	58	4	APKT1003	TX2506	BTX08
TW4-03D32	32	M16	17	28	45	68	5	APKT1003	TX2506	BTX08
Inserto	a	b	s	f	r					
APKT1003	6.35	10.8	3.55	2.8	0.4					

Twister

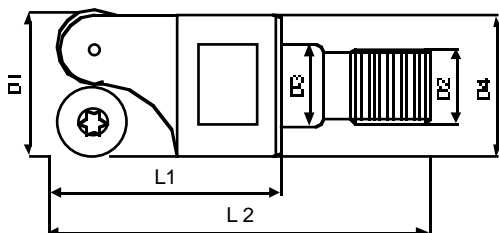
COMAND




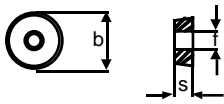


Modular toroidal tool piece
 Tête modulaire toroïdale
 Aufnahme konturfräser zum Aufschrauben

Twister

Testina modulare toroidale



Codice	Dimensioni mm							Inserto	Parti di Ricambio		
	D1	D2	D3	D4	L1	L2	Z				
TW1-04D10-2	10	M8	8.5	13	25	42	2	RDHW0501		TX2005	BTX06
TW1-04D12-2	12	M8	8.5	13	25	42	2	RDHW0702		TX2506	BTX08
TW1-04D12-3	12	M8	8.5	13	25	42	3	RDHW0501		TX2005	BTX06
TW1-04D15-3	15	M8	8.5	13	25	42	3	RDHW0702		TX2506	BTX08
TW1-04D16-2	16	M8	8.5	13	25	42	2	RDHW0802		TX3007	BTX08
TW2-04D20-2	20	M10	10.5	18	30	50	2	RDHW1003		TX3509	BTX15
TW2-04D20-4	20	M10	10.5	18	30	50	4	RDHW0702		TX2506	BTX08
TW3-04D25-2	25	M12	12.5	21	35	58	2	RDHW12T3	TXST3507	TX3509	BTX15
TW3-04D25-3	25	M12	12.5	21	35	58	3	RDHW1003		TX3509	BTX15
TW4-04D32-3	32	M16	17	28	45	68	3	RDHW12T3	TXST3507	TX3509	BTX15
Inserto	a		s		f						
RDHW0501	5		1.38		2.2						
RDHW0702	7		2.38		2.8						
RDHW0802	8		2.38		3.2						
RDHW1003	10		3.18		4.2						
RDHW12T3	12		3.96		4.4						

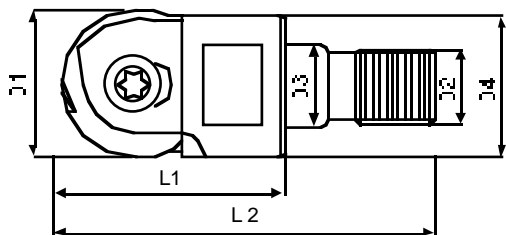
Twister

COMAND

Twister

Modular copying tool piece
 Tête modulaire pour reproduction
 Kopier-Schlichtfräser zum Aufschrauben

Testina modulare per copiatura



Codice	Dimensioni mm							Inserto	Parti di Ricambio	
	D1	D2	D3	D4	L1	L2	Z			
TW1-06D16	16	M8	8.5	13	25	42	1	CWR16	TX5012R	BTX20
TW2-06D20	20	M10	10.5	18	30	50	1	CWR20	TX5015R	BTX20
TW3-06D25	25	M12	12.5	21	35	58	1	CWR25	TX6020R	BTX30
TW4-06D32	32	M16	17	28	45	68	1	CWR32	TX8025R	BTX30
Inserto	a	b	s	f						
CWR16	14	16	3	5 h6						
CWR20	16	20	3	5 h6						
CWR25	21	25	4	6 h6						
CWR32	26	32	5	8 h6						

Twister

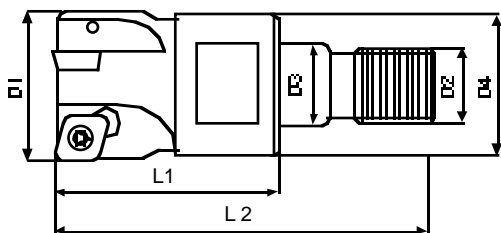




90° modular tool piece
 Tête modulaire 90°
 Eckfräser zum Aufschrauben 90°

Twister

Testina modulare 90°



Codice	Dimensioni mm							Inserto	Parti di Ricambio	
	D1	D2	D3	D4	L1	L2	Z			
TW1-11D16	16	M8	8.5	13	25	42	2	CCMW06	TX2506	BTX08
TW2-11D20	20	M10	10.5	18	30	50	3	CCMW06	TX2506	BTX08
TW3-11D25	25	M12	12.5	21	35	58	4	CCMW06	TX2506	BTX08
TW4-11D32	32	M16	17	28	45	68	5	CCMW06	TX2506	BTX08
Inserto	a	b	s	f	r					
CCMW060204	6.35	6.45	2.38	2.8	0.4					



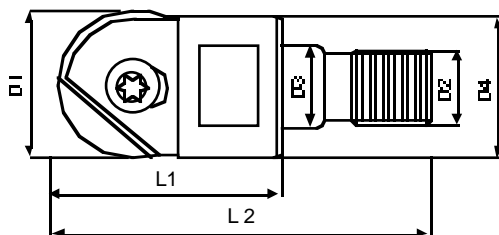
Twister



Twister

Modular copying tool piece
 Tête modulaire pour reproduction
 Kopier-Schlichtfräser zum Aufschrauben

Testina modulare per copiatura



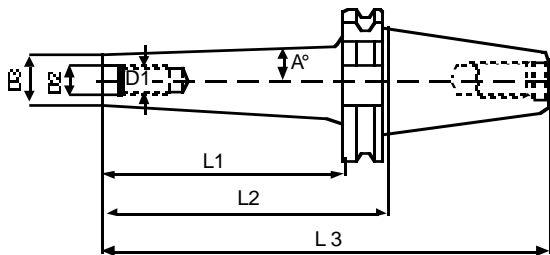
Codice	Dimensioni mm							Inserto	Parti di Ricambio	
	D1	D2	D3	D4	L1	L2	Z			
TW1-16D16	16	M8	8.5	13	25	42	1	CPH16	TX4013A	BTX15
TW2-16D20	20	M10	10.5	18	30	50	1	CPH20	TX5016A	BTX20
TW3-16D25	25	M12	12.5	21	35	58	1	CPH25	TX6020A	BTX30
TW4-16D32	32	M16	17	28	45	68	1	CPH32	TX8025A	BTX30
Inserto	a		b		s		f			
CPH16	12		16		4		4h6			
CPH20	15		20		5		5h6			
CPH25	18.5		25		6		6h6			
CPH32	24		32		6		8h6			

Twister

ISO 40 - DIN 69871 A modular spindle
 Broche modulaire DIN 69871 A - ISO 40
 SK40 - Aufnahme DIN 69871 A

Twister

Mandrino modulare DIN 69871 A - ISO 40



Codice	Attacco	Dimensioni mm						
		D1	D2	D3	L1	L2	L3	A°
MASK40TW1-C	SK40	M8	8.5	13	50	68	137.5	2°
MASK40TW1-H	SK40	M8	8.5	13	100	118	187.5	2°
MASK40TW2-C	SK40	M10	10.5	18	50	68	137.5	3°
MASK40TW2-H	SK40	M10	10.5	18	100	118	187.5	3°
MASK40TW2-M	SK40	M10	10.5	18	150	168	237.5	2°
MASK40TW3-C	SK40	M12	12.5	21	50	68	137.5	3°
MASK40TW3-H	SK40	M12	12.5	21	100	118	187.5	3°
MASK40TW3-M	SK40	M12	12.5	21	150	168	237.5	2°
MASK40TW4-E	SK40	M16	17	28	75	93	162.5	2°
MASK40TW4-K	SK40	M16	17	28	125	143	212.5	2°
MASK40TW4-M	SK40	M16	17	28	150	168	237.5	3°
MASK40TW4-Q	SK40	M16	17	28	175	193	262.5	3°



Twister

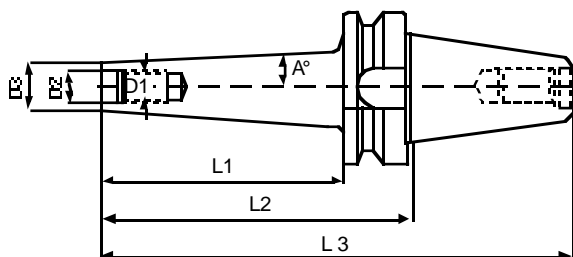


COMAND

Twister

BT 40 modular spindle - MAS403
 Broche modulaire MAS403 - BT40
 BT40 - Aufnahme MAS403

Mandrino modulare MAS403 - BT40



Codice	Attacco	Dimensioni mm						
		D1	D2	D3	L1	L2	L3	A°
MABT40TW1-C	BT40	M8	8.5	13	50	77.2	142.5	2°
MABT40TW1-H	BT40	M8	8.5	13	100	127.2	192.5	2°
MABT40TW2-C	BT40	M10	10.5	18	50	77.2	142.5	3°
MABT40TW2-H	BT40	M10	10.5	18	100	127.2	192.5	3°
MABT40TW2-M	BT40	M10	10.5	18	150	177.2	242.5	2°
MABT40TW3-C	BT40	M12	12.5	21	50	77.2	142.5	3°
MABT40TW3-H	BT40	M12	12.5	21	100	127.2	192.5	3°
MABT40TW3-M	BT40	M12	12.5	21	150	177.2	242.5	2°
MABT40TW4-E	BT40	M16	17	28	75	102.2	167.5	2°
MABT40TW4-K	BT40	M16	17	28	125	152.2	217.5	2°
MABT40TW4-M	BT40	M16	17	28	150	177.2	242.5	3°
MABT40TW4-Q	BT40	M16	17	28	175	202.2	267.5	3°

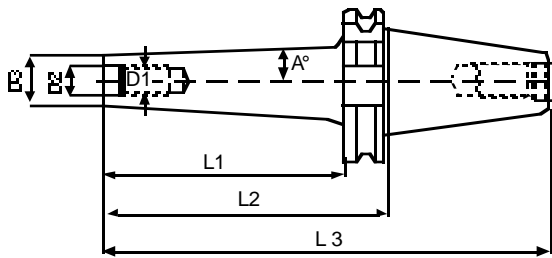
Twister



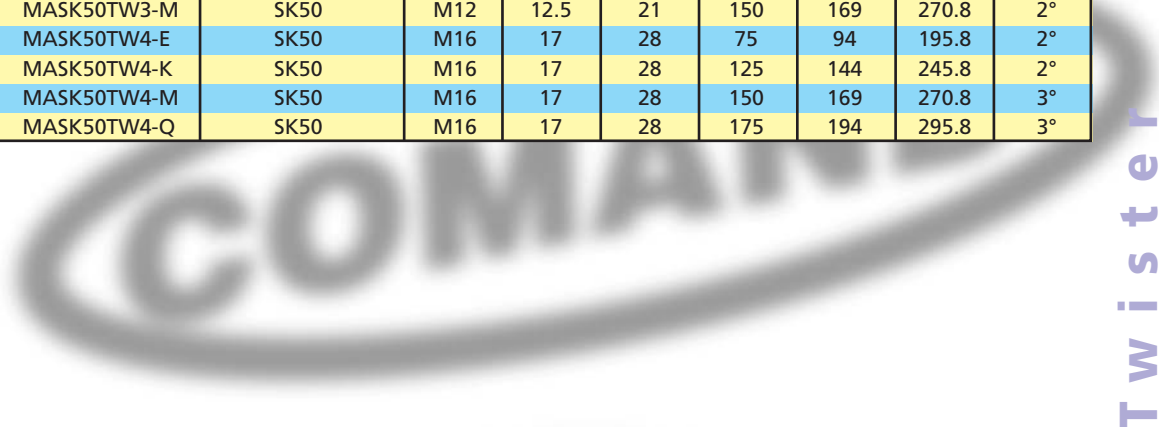
ISO 50 - DIN 69871 A modular spindle
 Broche modulaire DIN 69871 A - ISO 50
 SK50 - Aufnahme DIN 69871 A

Twister

Mandrino modulare DIN 69871 A - ISO 50



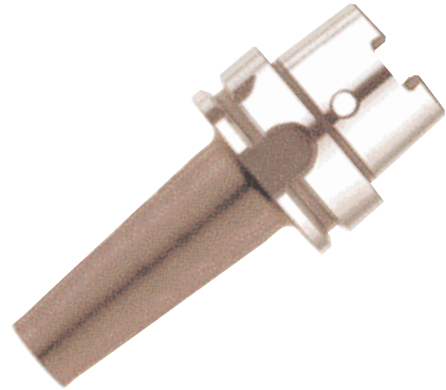
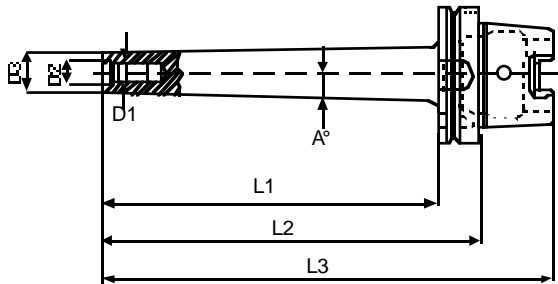
Codice	Attacco	Dimensioni mm						
		D1	D2	D3	L1	L2	L3	A°
MASK50TW1-C	SK50	M8	8.5	13	50	69	170.8	2°
MASK50TW1-H	SK50	M8	8.5	13	100	119	220.8	2°
MASK50TW2-C	SK50	M10	10.5	18	50	69	170.8	3°
MASK50TW2-H	SK50	M10	10.5	18	100	119	220.8	3°
MASK50TW2-M	SK50	M10	10.5	18	150	169	270.8	2°
MASK50TW3-C	SK50	M12	12.5	21	50	69	170.8	3°
MASK50TW3-H	SK50	M12	12.5	21	100	119	220.8	3°
MASK50TW3-M	SK50	M12	12.5	21	150	169	270.8	2°
MASK50TW4-E	SK50	M16	17	28	75	94	195.8	2°
MASK50TW4-K	SK50	M16	17	28	125	144	245.8	2°
MASK50TW4-M	SK50	M16	17	28	150	169	270.8	3°
MASK50TW4-Q	SK50	M16	17	28	175	194	295.8	3°



Twister

HSK 63 DIN 69893 modular spindle
 Broche modulaire DIN 69893 HSK 63
 HSK 63 - Aufnahme DIN 69893

Mandrino modulare DIN 69893 HSK 63



Codice	Attacco	Dimensioni mm						
		D1	D2	D3	L1	L2	L3	A°
MHSK63TW1-C	HSK63	M8	8.5	13	50	76	108	2°
MHSK63TW1-H	HSK63	M8	8.5	13	100	126	158	2°
MHSK63TW2-C	HSK63	M10	10.5	18	50	76	108	3°
MHSK63TW2-H	HSK63	M10	10.5	18	100	126	158	3°
MHSK63TW2-M	HSK63	M10	10.5	18	150	176	208	2°
MHSK63TW3-C	HSK63	M12	12.5	21	50	76	108	3°
MHSK63TW3-H	HSK63	M12	12.5	21	100	126	158	3°
MHSK63TW3-M	HSK63	M12	12.5	21	150	176	208	2°
MHSK63TW4-E	HSK63	M16	17	26	75	101	133	2°
MHSK63TW4-K	HSK63	M16	17	28	125	151	183	2°
MHSK63TW4-M	HSK63	M16	17	28	150	176	208	3°
MHSK63TW4-Q	HSK63	M16	17	28	175	201	233	3°

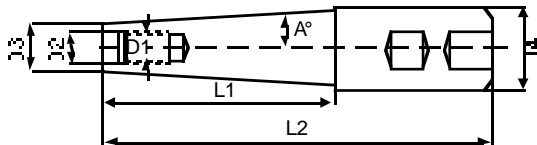
Twister



Modular cylindrical attachment DIN 1835A
 Prise cylindrique modulaire DIN 1835A
 Modularer, zylindrischer Anschluß DIN 1835A

Twister

Attacco cilindrico modulare DIN1835B



Codice	Attacco	Dimensioni mm						
		D1	D2	D3	D4	L1	L2	A°
PRTW1-20C	WELDON20	M8	8.5	13	20	50	100	4°
PRTW1-25H	WELDON25	M8	8.5	13	25	100	156	3°
PRTW1-32M	WELDON32	M8	8.5	13	32	150	210	3°
PRTW2-20C	WELDON20	M10	10.5	18	20	50	100	1.5°
PRTW2-25H	WELDON25	M10	10.5	18	25	100	156	2°
PRTW2-32M	WELDON32	M10	10.5	18	32	150	210	2.5°
PRTW3-25E	WELDON25	M12	12.5	21	25	75	135	1.5°
PRTW3-32K	WELDON32	M12	12.5	21	32	125	185	2°
PRTW3-32P	WELDON32	M12	12.5	21	32	180	240	1.5°
PRTW4-32E	WELDON32	M16	17	28	32	75	135	1.5°
PRTW4-32K	WELDON32	M16	17	28	32	125	185	1°
PRTW4-32P	WELDON32	M16	17	28	32	180	240	0.5°



Twister

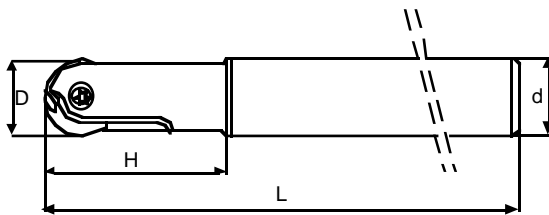


COMAND

Copymill M65

Copying milling machine
Fraises pour reproduction
Nachformfräsen

Frese per copiatura



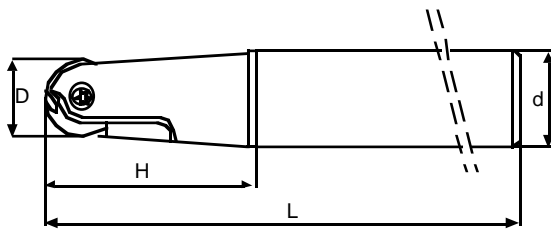
C o p y m i l l M 6 5



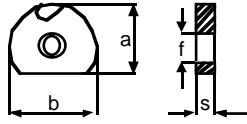
Codice	Dimensioni mm					Inserto	Parti di Ricambio	
	D	d	Z	H	L			
M65D12	12	12	1	40	150	CWR12	TX5009R	BTX20
M65D16	16	16	1	40	180	CWR16	TX5012R	BTX20
M65D20	20	20	1	60	180	CWR20	TX5015R	BTX20
M65D25	25	25	1	80	210	CWR25	TX6020R	BTX30
M65D32	32	32	1	80	210	CWR32	TX8025R	BTX30
Inserto	a	b	s	f H6				
CWR12	12	12	2.5	5				
CWR16	14	16	3	5				
CWR20	16	20	3	5				
CWR25	21	25	4	6				
CWR32	26	32	5	8				

Copying milling machine
Fraises pour reproduction
Nachformfräsen

Copymill M67

Frese per copiatura



Codice	Dimensioni mm					Inserto	Parti di Ricambio	
	D	d	Z	H	L			
M67D08	8	12	1	40	125	CWR08	TX3007R	BTX08
M67D10	10	12	1	40	150	CWR10	TX4008R	BTX15
M67D12	12	16	1	80	180	CWR12	TX5009R	BTX20
M67D16	16	20	1	80	180	CWR16	TX5012R	BTX20
M67D20	20	25	1	100	210	CWR20	TX5015R	BTX20
M67D25	25	32	1	100	210	CWR25	TX6020R	BTX30
Inserto	a	b	s	f H6				
CWR08	9.5	8	2	3				
CWR10	11.5	10	2.5	4				
CWR12	12	12	2.5	5				
CWR16	14	16	3	5				
CWR20	16	20	3	5				
CWR25	21	25	4	6				

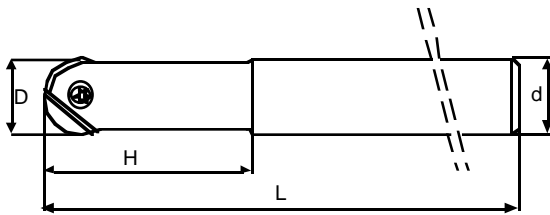
Copy mill M67

COMAND



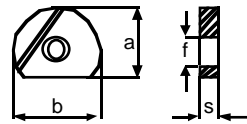
Copymill M165

Copying milling machine
Fraises pour reproduction
Nachformfräsen

Frese per copiatura



C o p y m i l l M 1 6 5

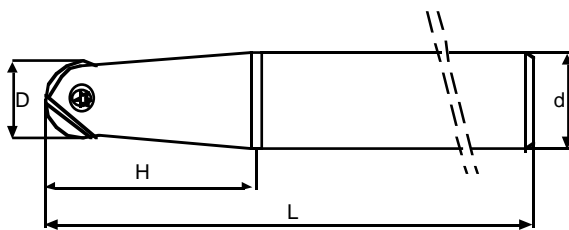
Codice	Dimensioni mm					Inserto	Parti di Ricambio	
	D	d	Z	H	L			
M165D12	12	12	1	40	150	CPH12	TX3509A	BTX10
M165D16	16	16	1	60	180	CPH16	TX4013A	BTX15
M165D20	20	20	1	60	180	CPH20	TX5016A	BTX20
M165D25	25	25	1	80	210	CPH25	TX6020A	BTX30
M165D32	32	32	1	80	210	CPH32	TX8025A	BTX30
Inserto	a	b	s	f H6				
CPH12	10	12	3	3.5				
CPH16	12	16	4	4				
CPH20	15	20	5	5				
CPH25	18.5	25	6	6				
CPH32	24	32	6	8				



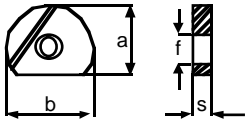


Copying milling machine
Fraises pour reproduction
Nachformfräsen

Copymill M167

Frese per copiatura



Codice	Dimensioni mm					Inserto	Parti di Ricambio	
	D	d	Z	H	L			
M167D08	8	12	1	40	125	CPH08	TX2507A	BTX06
M167D10	10	12	1	40	150	CPH10	TX3008A	BTX07
M167D12	12	16	1	80	180	CPH12	TX3509A	BTX10
M167D16	16	20	1	80	180	CPH16	TX4013A	BTX15
M167D20	20	25	1	100	210	CPH20	TX5016A	BTX20
M167D25	25	32	1	100	210	CPH25	TX6020A	BTX30
Inserto	a	b	s	f H6				
CPH08	6.5	8	2.4	2.5				
CPH10	8	10	2.5	3				
CPH12	10	12	3	3.5				
CPH16	12	16	4	4				
CPH20	15	20	5	5				
CPH25	18.5	25	6	6				

Copy mill M167

COMAND

Note

