

COMAND

5



Fastcut

Programma generale di troncatura

*Tools for shearing
Outils de tronçonnage
Schneidwerkzeuge*



COMAND

Indice

Contents
Index
Inhaltsverzeichnis

Fastcut

PLC...

Portalama

pag. 5-3

LA...

Lama per troncatura

pag. 5-4

SGIH...

Lama per troncatura con stop

pag. 5-5

FCGER/L...

Utensili per troncatura esterna

pag. 5-6



I n d i c e

COMAND

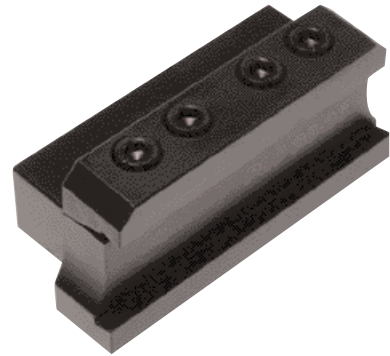
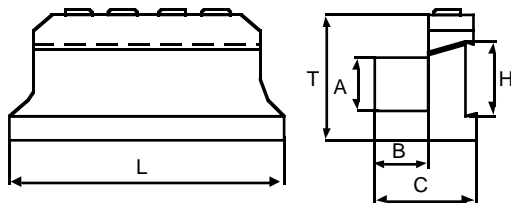


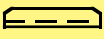




Tool blocks
Porte lames
Spannschäfte

PLC...

Portalama



Codice	Dimensioni mm						Parti di Ricambio		
	H	A	B	C	L	T			
PLC 16-19	19	16	16	33	80	33	STL19	VB6020	CBR5
PLC 16-26	26	16	16	34	80	40	STL2616	VB6020	CBR5
PLC 20-26	26	20	19	38	90	42	STL26	VB6020	CBR5
PLC 20-32	32	20	19	38	120	48	STL32	VB6020	CBR5
PLC 25-26	26	25	23	42	90	43	STL26	VB6020	CBR5
PLC 25-32	32	25	23	42	120	48	STL32	VB6020	CBR5



PLC...

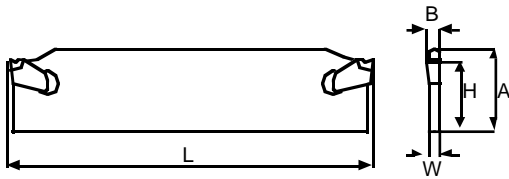



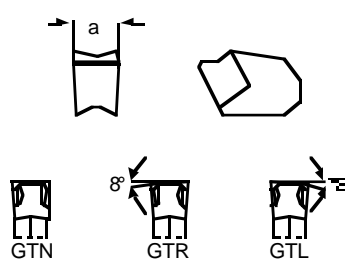
COMAND

LA...

Cutting blades
Lames a tronçonner
Abstechträger

Lama per troncane



Codice	Dimensioni mm					Inserto	Parti di Ricambio
	A	B	H	W	L		
LA085192	19	2	16	1.6	85	GT..2	CLT5
LA110262	26	2	21.4	1.6	110	GT..2	CLT5
LA110263	26	3	21.4	2.4	110	GT..3	CLT5
LA110264	26	4	21.4	3.2	110	GT..4	CLT5
LA110265	26	5	21.4	4	110	GT..5	CLT5
LA110266	26	6	21.4	5.2	110	GT..6	CLT5
LA150323	32	3	25	2.4	150	GT..3	CLT5
LA150324	32	4	25	3.2	150	GT..4	CLT5
LA150325	32	5	25	4	150	GT..5	CLT5
LA150326	32	6	25	5.2	150	GT..6	CLT5
LA150328	32	8	25	7.2	150	GT..8	CLT5
LA150329	32	9	25	8	150		
Inserto	a	N	R	L			
GTN../GTR../GTL2	2.2	0	8°	8°			
GTN../GTR../GTL3	3.1	0	8°	8°			
GTN../GTR../GTL4	4.1	0	8°	8°			
GTN../GTR../GTL5	5.1	0	8°	8°			
GTN../GTR../GTL6	6.4	0	-	-			
GTN../GTR../GTL8	8	0	-	-			
GTN../GTR../GTL9	9.6	0	-	-			

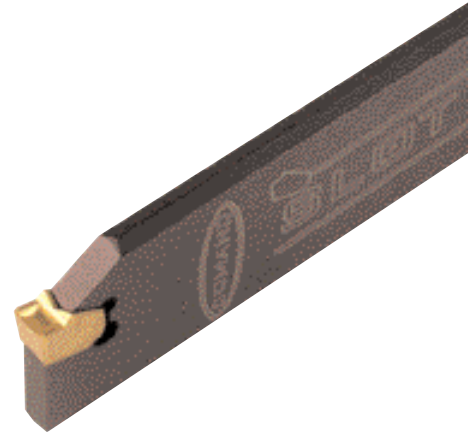
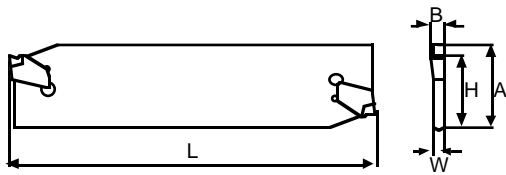
COMAND


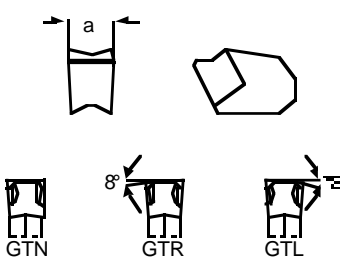


Cutting blades with stop
Lames a tronçonner avec stop
Abstechträger mit Anschlag

SGIH...

Lama per troncare con stop



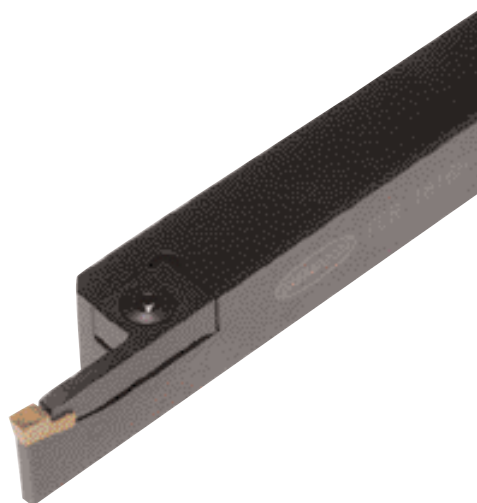
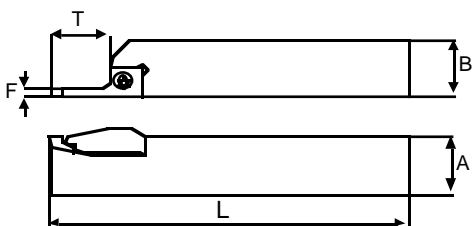
Codice	Dimensioni mm					Inserto	Parti di Ricambio
	A	B	H	W	L		
SGIH 19-2	19	2	16	1.6	85	GT..2	CLT5
SGIH 26-2	26	2	21.4	1.6	110	GT..2	CLT5
SGIH 26-3	26	3	21.4	2.4	110	GT..3	CLT5
SGIH 26-4	26	4	21.4	3.2	110	GT..4	CLT5
SGIH 26-5	26	5	21.4	4	110	GT..5	CLT5
SGIH 26-6	26	6	21.4	5.2	110	GT..6	CLT5
SGIH 32-3	32	3	25	2.4	150	GT..3	CLT5
SGIH 32-4	32	4	25	3.2	150	GT..4	CLT5
SGIH 32-5	32	5	25	4	150	GT..5	CLT5
SGIH 32-6	32	6	25	5.2	150	GT..6	CLT5
SGIH 32-8	32	8	25	7.2	150	GT..8	CLT5
SGIH 32-9	32	9	25	8	150	GT..9	CLT5
Inserto	a	N	R	L			
GTN../GTR../GTL2	2.2	0	8°	8°			
GTN../GTR../GTL3	3.1	0	8°	8°			
GTN../GTR../GTL4	4.1	0	8°	8°			
GTN../GTR../GTL5	5.1	0	8°	8°			
GTN../GTR../GTL6	6.4	0	-	-			
GTN../GTR../GTL8	8	0	-	-			
GTN../GTR../GTL9	9.6	0	-	-			




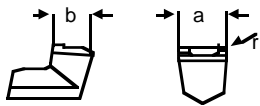
SGIH...

FCGER/L...

Holder for parting-off
Porte plaquettes a tronçonner
Klemmhalter zum Abstechen

Utensili per troncatura esterna



Codice	Dimensioni mm						Inserto	Parti di Ricambio		
	F	H	B	A	L	T				
FCGER/L 1212H3	3	12	12	12	100	15	CGN3	STFGER/L3-A	TX4016	BTX15
FCGER/L 1616H3	3	16	16	16	100	20	CGN3	STFGER/L3	TX4016	BTX15
FCGER/L 2020K3	3	20	20	20	125	20	CGN3	STFGER/L3	TX4016	BTX15
FCGER/L 2525M3	3	25	25	25	150	20	CGN3	STFGER/L3	TX4016	BTX15
FCGER/L 2020K4	4	20	20	20	125	25	CGN4	STFGER/L4	TX4016	BTX15
FCGER/L 2525M4	4	25	25	25	150	25	CGN4	STFGER/L4	TX4016	BTX15
FCGER/L 2525M5	5	25	25	25	150	25	CGN5	STFGER/L5	TX4016	BTX15
Inserto	a		b		r					
CGN3	3		4.2		0.2					
CGN4	4		4.2		0.2					
CGN5	5		4.6		0.2					

FCGER/L...



COMAND

Note



COMAND

Note

